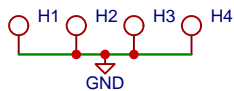
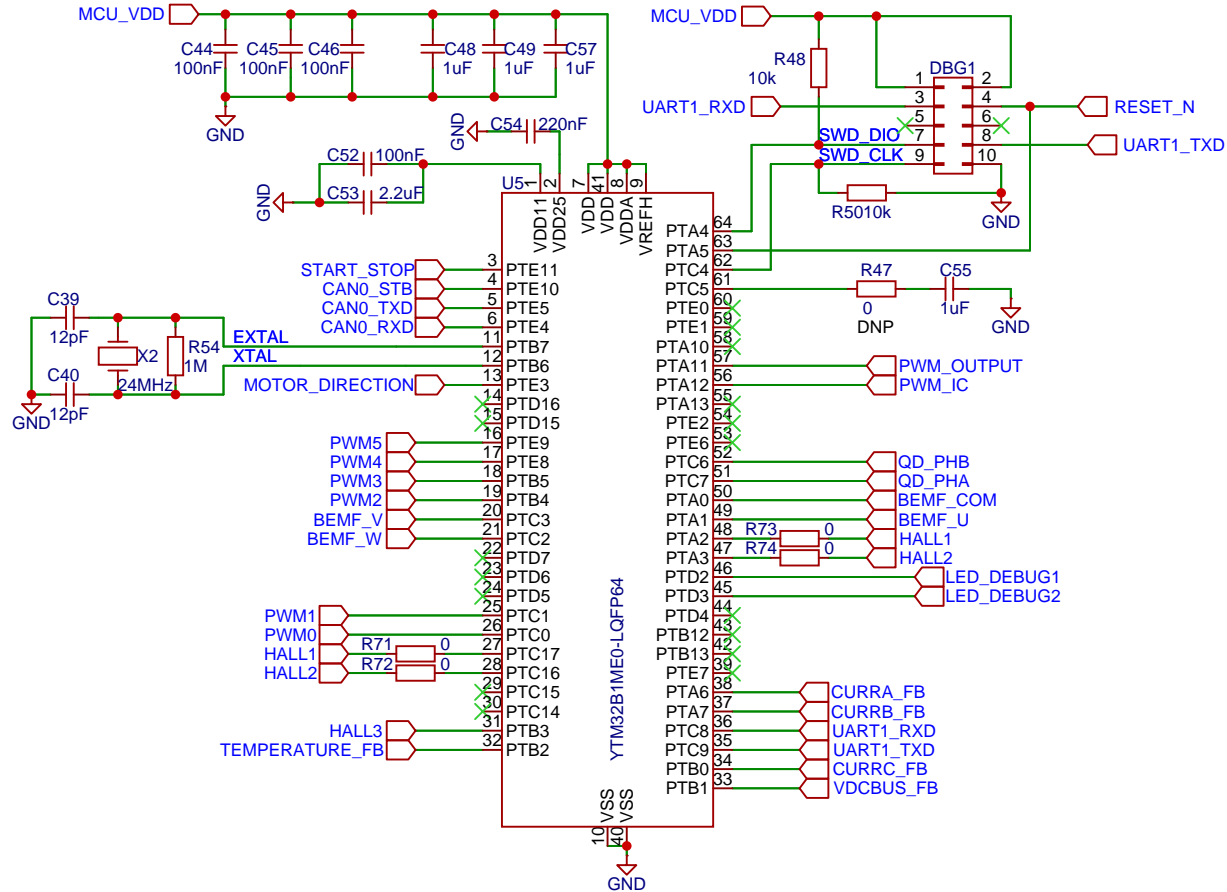

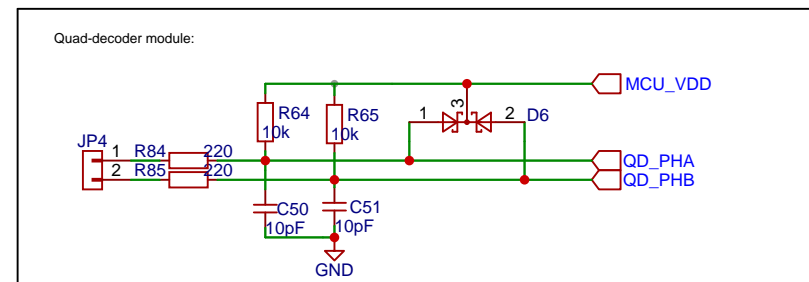
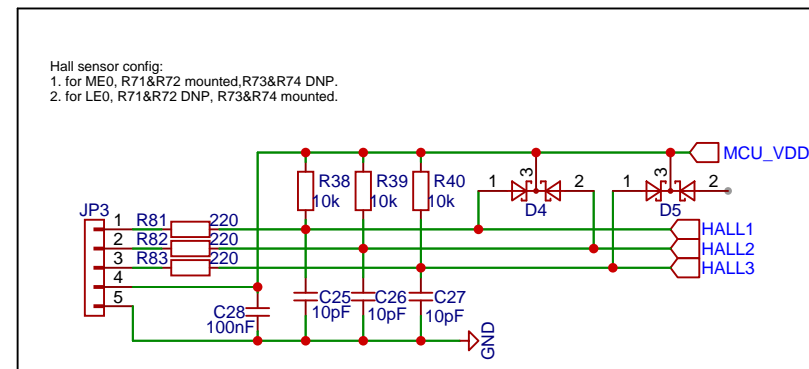
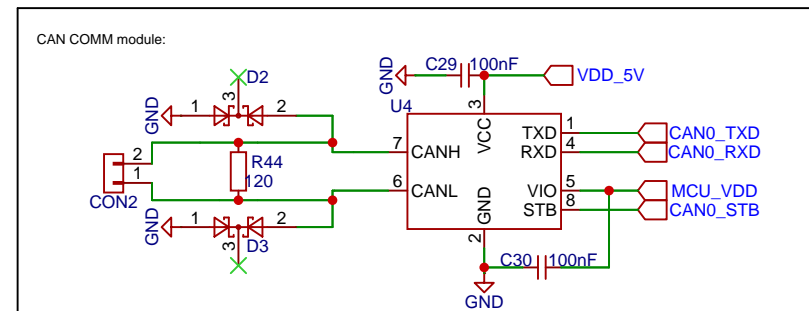
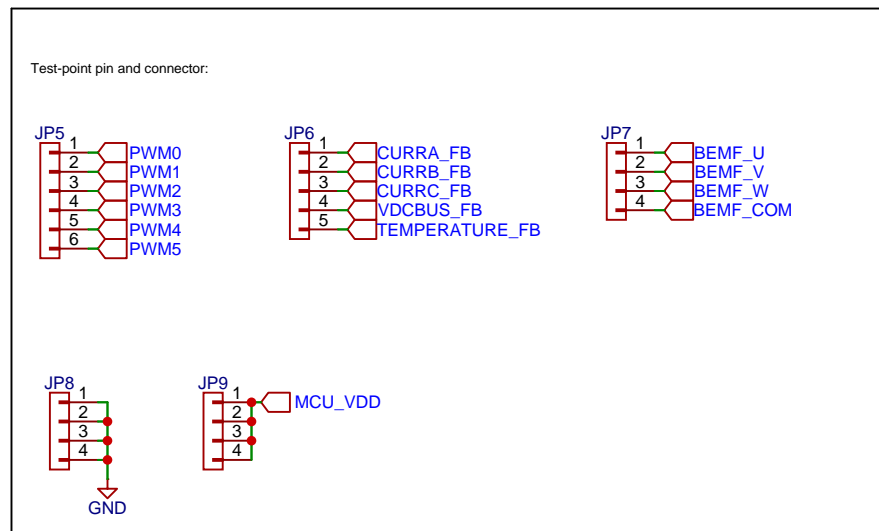
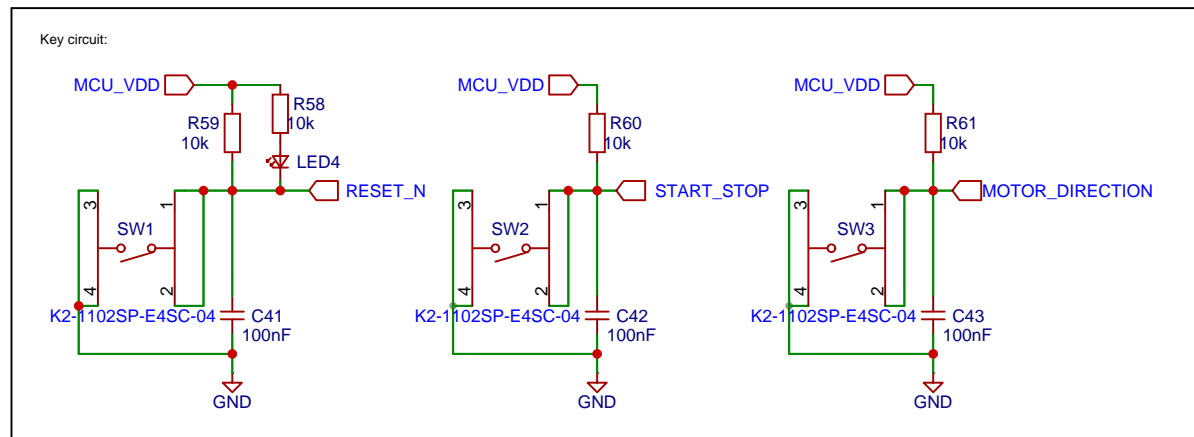


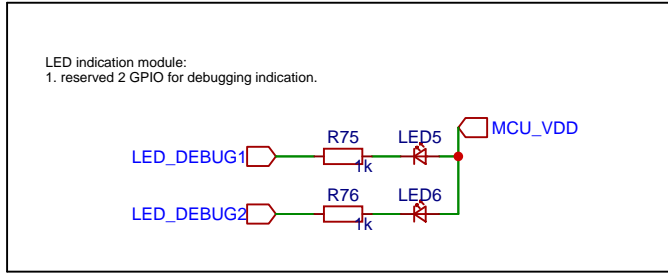
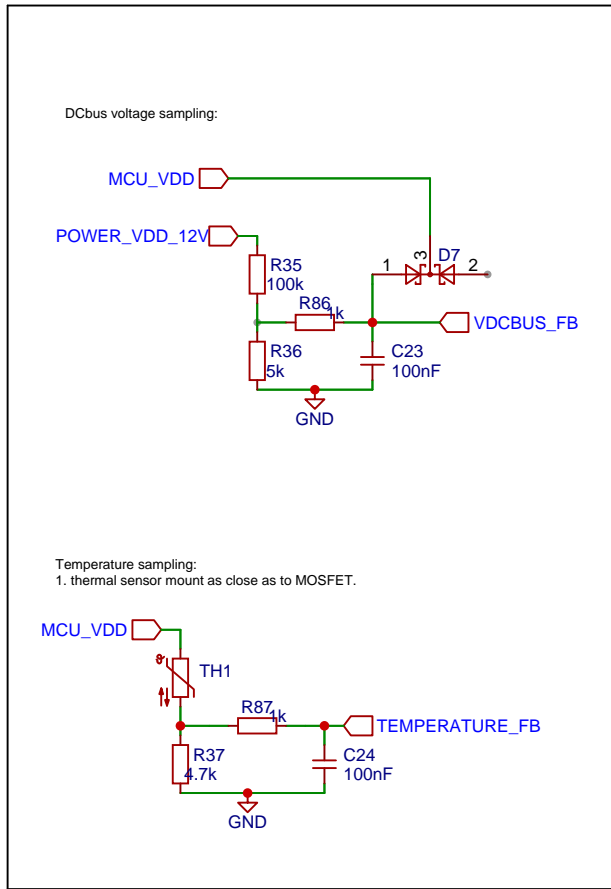
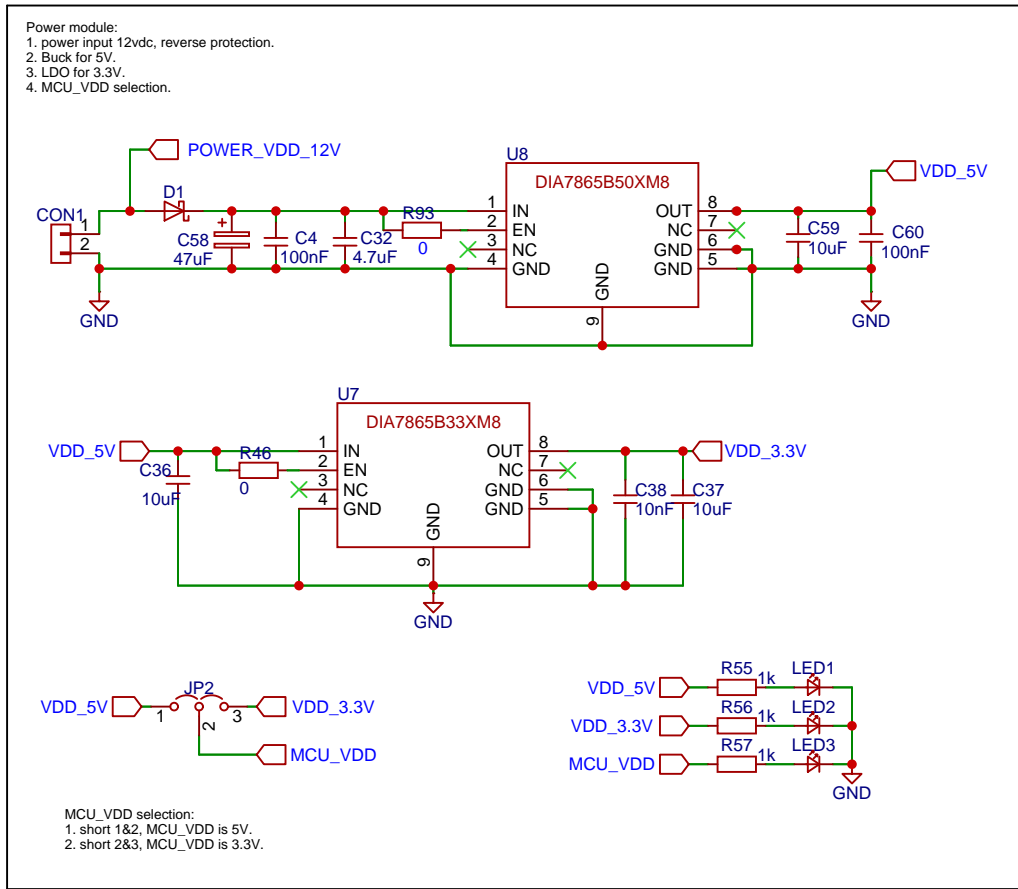
MCU mini-system connection :  
1. debug interface.  
2. external clock.  
3. VDD, VDDA, VREFH, VSS.  
4. use R47 for matching LD0(pronoea) of VDD15.




Schematic	motor_driver			Update Date	2025-04-22
				Create Date	2024-02-27
Page	mcu			Part Number	
Drawed	Feng Jialu	YTM32B1MEx_motor_driver.RevB			
Reviewed	Major Lin				
		VER	SIZE	PAGE	1 OF 4
		Rev B	A4	Yuntu Microelectronics Co., LTD.	

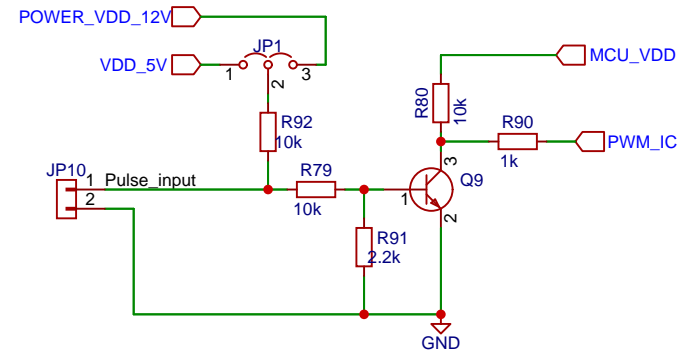


Schematic	motor_driver		Update Date	2025-04-21
			Create Date	2024-02-27
Page	header		Part Number	
Drawn	Feng Jialu	YTM32B1MEx_motor_driver.RevB		
Reviewed	Major Lin			
		VER	SIZE	PAGE 2 OF 4
		Rev B	A4	Yuntu Microelectronics Co., LTD.

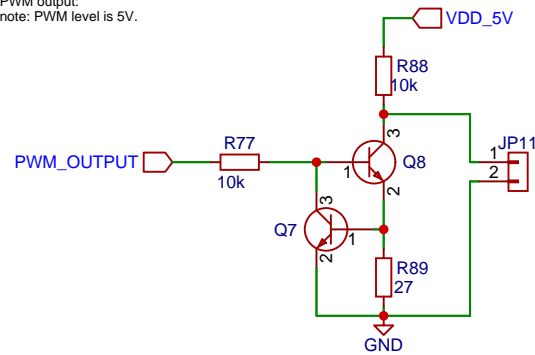


Schematic	motor_driver			Update Date	2025-04-22
				Create Date	2024-05-07
Page	power			Part Number	
Drawn	Feng Jialu	YTM32B1MEx_motor_driver.RevB			
Reviewed	Major Lin				
		VER	SIZE	PAGE	3 OF 4
		Rev B	A4	Yuntu Microelectronics Co., LTD.	

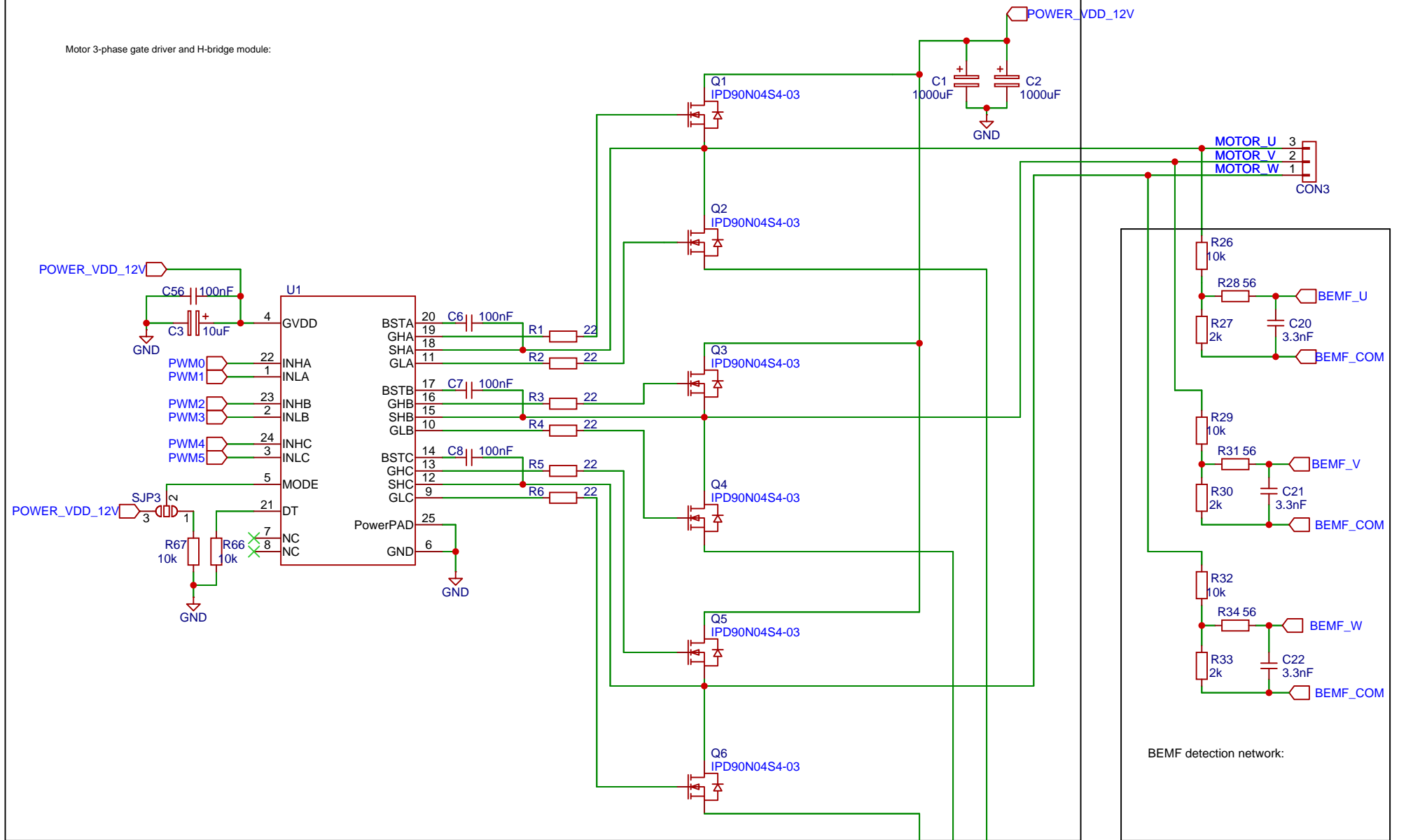
PWM input capture:  
note:  
1. if pulse input signal with open drain no pull-up, need mount R92.  
2. if open drain with pull-up, not mount R92.  
3. adjust R79 & R91 value, according to input signal level.



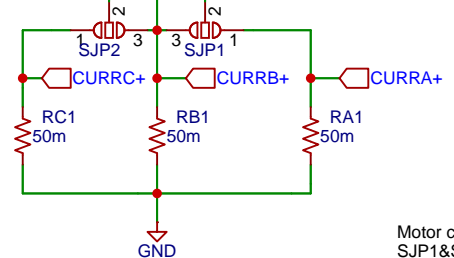
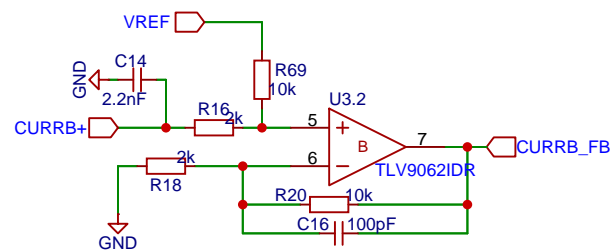
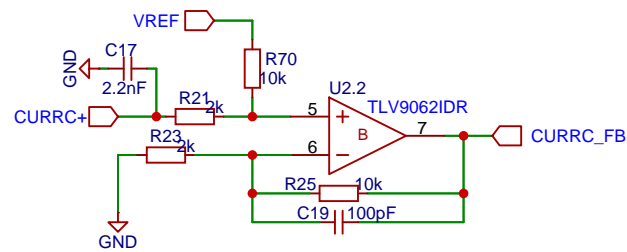
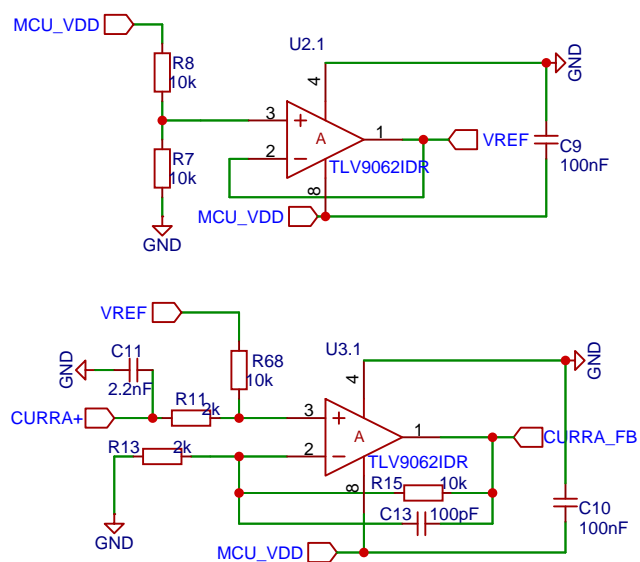
PWM output:  
note: PWM level is 5V.




Motor 3-phase gate driver and H-bridge module:



Shunt resistor current sampling:



Motor current sampling topology:  
SJP1&SJP2 config:  
1. short 1&2, three shunt resistor.  
2. short 2&3, single shunt resistor.

Schematic	motor_driver			Update Date	2025-04-22				
				Create Date	2024-12-04				
Page	motor			Part Number					
Drawn	Feng Jialu		YTM32B1MEx_motor_driver.RevB						
Reviewed	Major Lin								
<div><div>云途 YUNTU</div></div>			VER	SIZE	PAGE	4	OF	4	
			Rev B		Yuntu Microelectronics Co., LTD.				